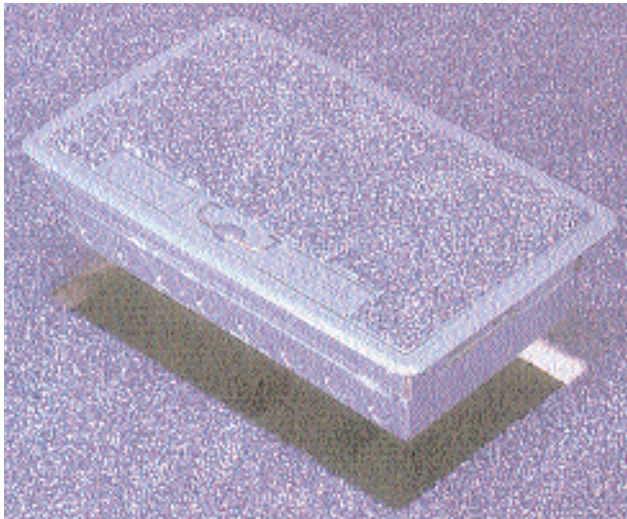




# BATT BOX



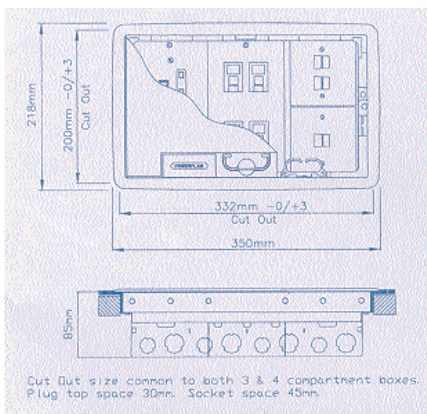
- Unique push-fit - no tools required
  - Reversible lid and trim assembly
  - Strong lid lifting handle
  - Fixes automatically

- Carpet trim reinforced with steel
- Twin knockout to all compartments
- Generous installation tolerance
- Standard colour - grey

Part No.	Description
<b>3 Compartment 350 x 218 x 85 mm</b>	
66000	3 Compartment Unloaded floorbox (85mm Deep)
66018	3 Compartment box loaded with 1 dual 13A socket
66013	13A Dual Socket
66004	Blank plate
66005	Punched plate to accept 4 LJ6C size modules
66006	Punched plate to accept 2x86mm faceplates

Part No.	Description
<b>2 Compartment 350 x 218 x 85 mm</b>	
66019	2 Compartment Unloaded floorbox (85mm Deep)
66002	2 Compartment box loaded with 1 dual 13A socket
66020	13A Dual Socket
66021	Blank Plate
66022	Punched plate to accept 4 LJ6C size modules
66023	Punched plate to accept 2x86mm faceplates

Part No.	Description
<b>4 Compartment 350 x 218 x 85 mm</b>	
66001	4 Compartment Unloaded floorbox (85mm Deep)
66024	4 Compartment box loaded with 1 dual 13A socket
66025	13A Dual Socket
66026	Blank Plate
66027	Punched plate to accept 4 LJ6C size modules
66028	Punched plate to accept 2x86mm faceplates



Erith 01322 441166

Networks 01322 441169

Birmingham 0121 313 2870

Cardiff 02920 450044

Edinburgh 0131 333 4400

Networks 0131 333 4411

Aberdeen 01224 897979

Peterborough 01733 558485

Bristol 0117 966 6333

Teesside 01642 678633

Manchester 01204 793111

Rotterdam +31 186 622311