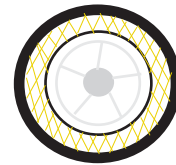
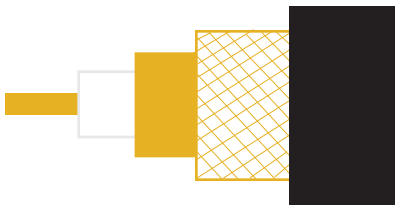




## CT125 LSZH Cable

### CONSTRUCTION

Inner Conductor	1/1.25mm bare copper
Insulation	5.50+/- 0.10mm 5 cell air spaced PE
Foil	overlapped copper foil
Braid	16/6/0.12mm bare copper wire (coverage: 60%)
Sheath	7.80+/- 0.20mm black LSZH
BATT Part Number	49172



### CHARACTERISTICS

Impedance:	75+/-3 Ohm	
Capacitance	52+/-3 pF/M	
Attenuation	5MHz	0.80 dB/100m
20 degree C	10MHz	1.20dB/100m
	50MHz	3.20 dB/100m
	100MHz	5.40 dB/100m
	200MHz	6.50 dB/100m
	300MHz	8.50 dB/100m
	470MHz	11.00 dB/100m
	600MHz	13.50 dB/100m
	1000MHz	16.40 dB/100m

[www.batt.co.uk](http://www.batt.co.uk)

[battindustrial.sales@batt.co.uk](mailto:battindustrial.sales@batt.co.uk)

Aberdeen: 01224 897979

Erith: 01322 441165

Copenhagen: +45 3965 6650

Birmingham: 0121 313 2870

Leeds: 0113 253 3565

Houston: + 1 713 590 1100

Bristol: 0117 966 6333

Manchester: 01204 793111

Mainz: +49 6131 6273874

Cardiff: 02920 450044

Peterborough: 01733 558485

Rotterdam: + 31 186 622311