

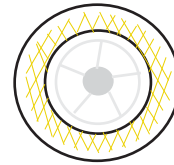
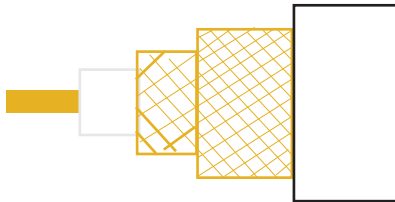


## BT2003 LSZH CW1229 Cable

### CONSTRUCTION

Inner Conductor	1/0.61mm bare copper
Insulation	3.70+/- 0.10mm PE
Braid	2 x bare copper wire (coverage: 96%)
Sheath	LSZH, white 6.9 mm overall diameter

BATT Part Number 49148



### CHARACTERISTICS

Impedance:	75+/-3 Ohm	
Attenuation 20 degree C	5MHz	2.60 dB/100m
	60MHz	9.0 dB/100m
Operating Temp	-10 to +70 degrees C	

[www.batt.co.uk](http://www.batt.co.uk)

[battindustrial.sales@batt.co.uk](mailto:battindustrial.sales@batt.co.uk)

Aberdeen: 01224 897979

Erith: 01322 441165

Copenhagen: +45 3965 6650

Birmingham: 0121 313 2870

Leeds: 0113 253 3565

Houston: + 1 713 590 1100

Bristol: 0117 966 6333

Manchester: 01204 793111

Mainz: +49 6131 6273874

Cardiff: 02920 450044

Peterborough: 01733 558485

Rotterdam: + 31 186 622311

Edinburgh: 0131 333 4400

Teesside: 01642 678633